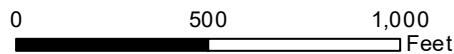
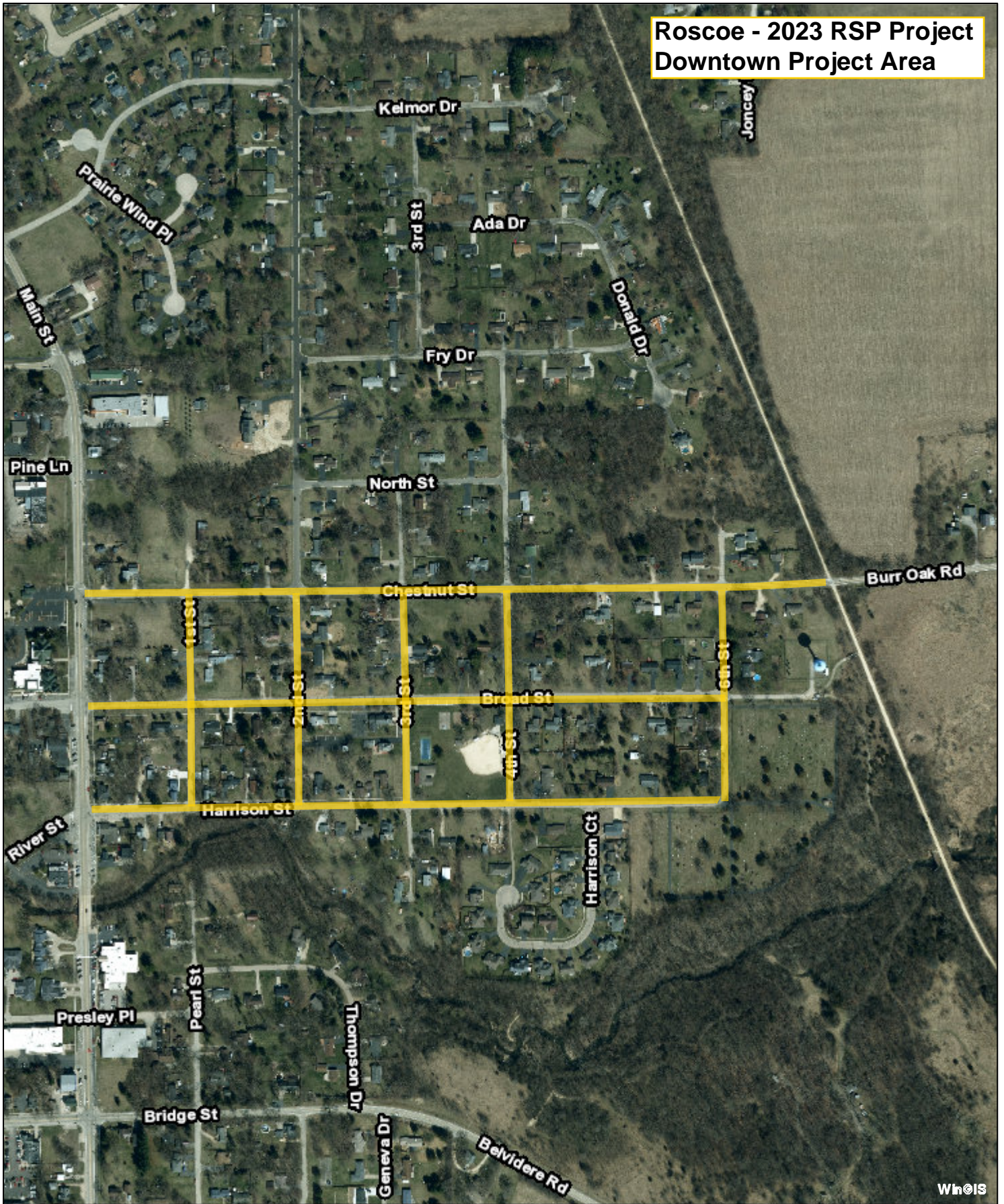


Roscoe - 2023 RSP Project
Downtown Project Area



SCALE: 1:6,000



Winnebago County Geographic Information System

WinGIS cannot and does not warrant the accuracy of: property and boundary lines, dimensions of parcels and lots, location of structures or improvements, and topographic or geologic features on the land. Only on-site verification or field surveys by a licensed professional land surveyor can provide such accuracy.